

Quality Products From Our Family To Yours

Shoreline Vinyl Systems, Inc. is a family owned and operated vinyl fencing and railing fabrication company located in the Mid-Atlantic region. As a family of construction industry professionals, we consider quality service and customer satisfaction our top priority. We specialize in the design and fabrication of quality vinyl and aluminum products that are easy to install, low-maintenance, and built to last. Our quality products provide you with years of lasting beauty without worry of rotting, cracking, peeling or painting.

We offer a broad selection of boxed railing sections for residential and commercial heights and are pre-cut to convenient standard lengths. Routed holes are consistent and sized with close tolerances, providing not only a great fit, but a quality look as well.

For your unique railing project, you can rest assured that we will work closely with your authorized Dealer/Contractor as a team to deliver the best-quality railing products in a timely manner for you to enjoy for a lifetime.



- All railing systems are 100% vinyl
- Never need painting
- Won't rust, rot, crack, or peel
- No splinters
- Standard heights of 36" and 42"
- Standard lengths of 4', 5', 6', 8' and 10'
- Standard stair rail slopes of 29°-35° and 36°-41°
- Custom radius bends are available
- Porch posts and newel posts are sold separately
- Gates are available in all sizes
- Easy installation
- Aluminum reinforced rails for added strength
- A variety of baluster styles to choose from

LIFETIME WARRANTY



MADE IN

U. S. A.

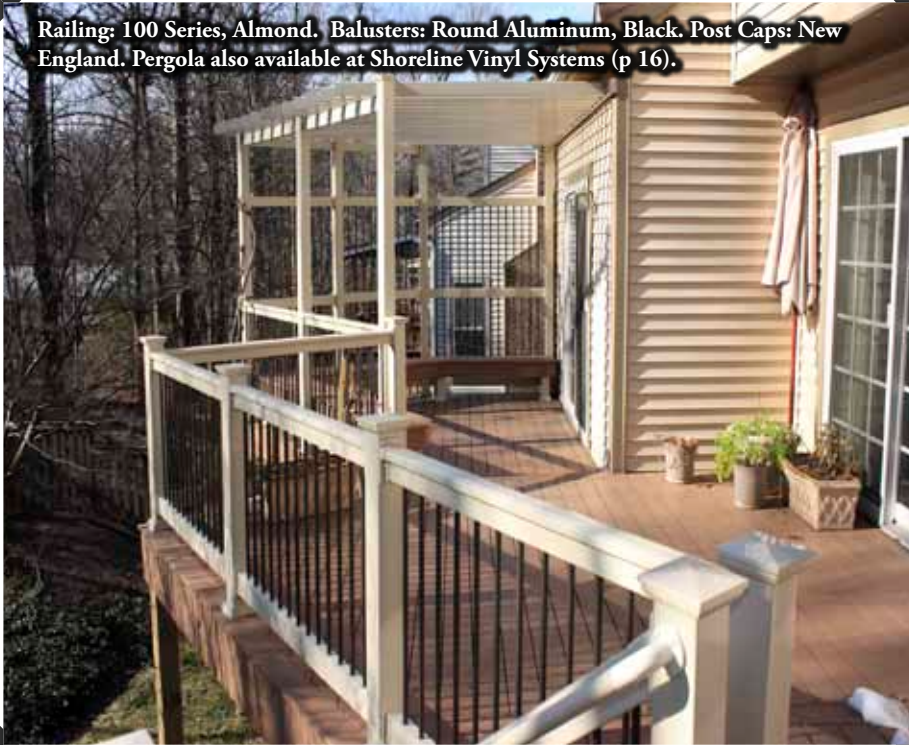
 ESR-1657

Custom radiuses are available



Table of Contents

Railing: 100 Series, Almond. Balusters: Round Aluminum, Black. Post Caps: New England. Pergola also available at Shoreline Vinyl Systems (p 16).



100 Series Railing.....	4
200 Series Railing.....	5
100/200 Series Balusters.....	6
100/200 Series Brackets.....	8
300 Series Railing.....	9
300 Series Brackets and Balusters	10
Railing Accessories - Vinyl Post Caps.....	11
Railing Accessories - Posts	12
Railing Accessories - Columns.....	13
Secondary Handrail.....	14
Privacy Dividers	15
Pergolas, Arbors and Lattice	16
Photo Gallery.....	17-23

Railing: 100 Series, White. Balusters: Standard Square, White. Post Caps: New England.



Railing: 100 Series, Almond. Balusters: Standard Square, Almond. Post Caps: New England. Pergola also available at Shoreline Vinyl Systems (p 16).



100 Series Railing



Railing: 100 Series, White. Balusters: Standard Square, White. Lighted Post Caps: Cambridge. Pergola and Lattice also available at Shoreline Vinyl Systems.



Top T-Rail
3½" Wide
3½" High
Aluminum Reinforced



Bottom Rail
2" Wide
3½" High
Aluminum Reinforced
(optional)



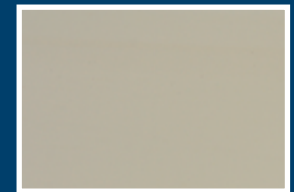
Railing: 100 Series, Almond. Balusters: Colonial, Almond

Colors

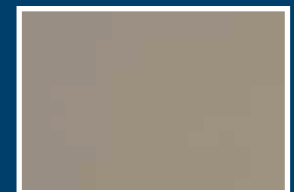
White



Almond



Khaki



200 Series Railing



Railing: 200 Series, White. Balusters: Standard Square, White. ** Note: Photos show example of 200 Series Railing with post lighting (sold separately) and topped with deck boards (sold separately).

Top T-Rail

2" Wide
3½" High
Aluminum Reinforced
(deck board sold
separately)

Bottom Rail

2" Wide
3½" High
(Aluminum Reinforced
optional)

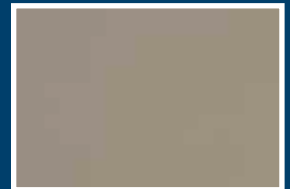
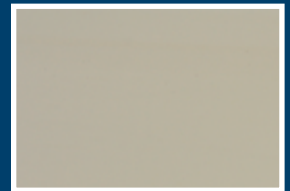


Colors

White

Almond

Khaki



100/200 Series Balusters



BB - Standard Square



BC - Standard Colonial



BD - Twist



BE - Georgetown



BF - Crescent



BG - Chestertown



BH - Province



BI - Colony



BL - Greek



BM - Capitol

100/200 Series Balusters



BP - Victorian



BQ - Parthenon



BR - Contemporary



BS - French Colonial



CC - 4"-wide Glass



CL - 1/4" Clear Acrylic Panel
(Available in 6' and 8' widths)



LP - Round Aluminum Black
(Shown with Almond Rail)



LQ - Round Aluminum Bronze



Aluminum Baluster Decorators

Collar

Basket

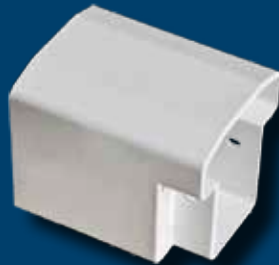
100 Series Brackets



Level



45 Degree



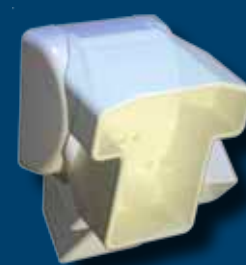
Field Cut



Stairs - Upper



Stairs - Lower



Multi-Angle - Stairs



Multi-Angle - Level



200 Series Brackets



Level



45 Degree



Field Cut



Deck Board
Mounting Bracket



Stairs



300 Series Railing

ICC AC-174 CODE-COMPLIANT

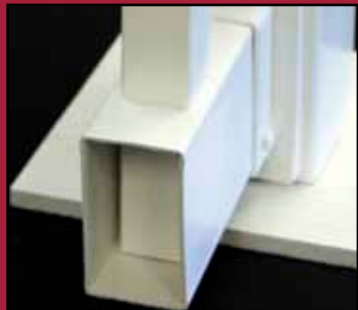


Railing: 300 Series, White. Balusters shown: Square (NN), White. Also available with Shaker Balusters (BN) and Round Aluminum Balusters in Black (LP) or Bronze (LQ).



Top T-Rail

3" Wide
1 3/4" High
Aluminum
Reinforced



Bottom Rail

2" Wide
3 1/2" High
(Aluminum
Reinforced optional)

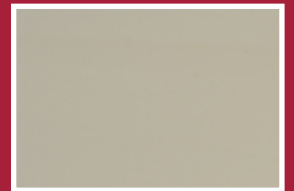


Colors

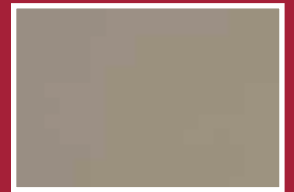
White



Almond

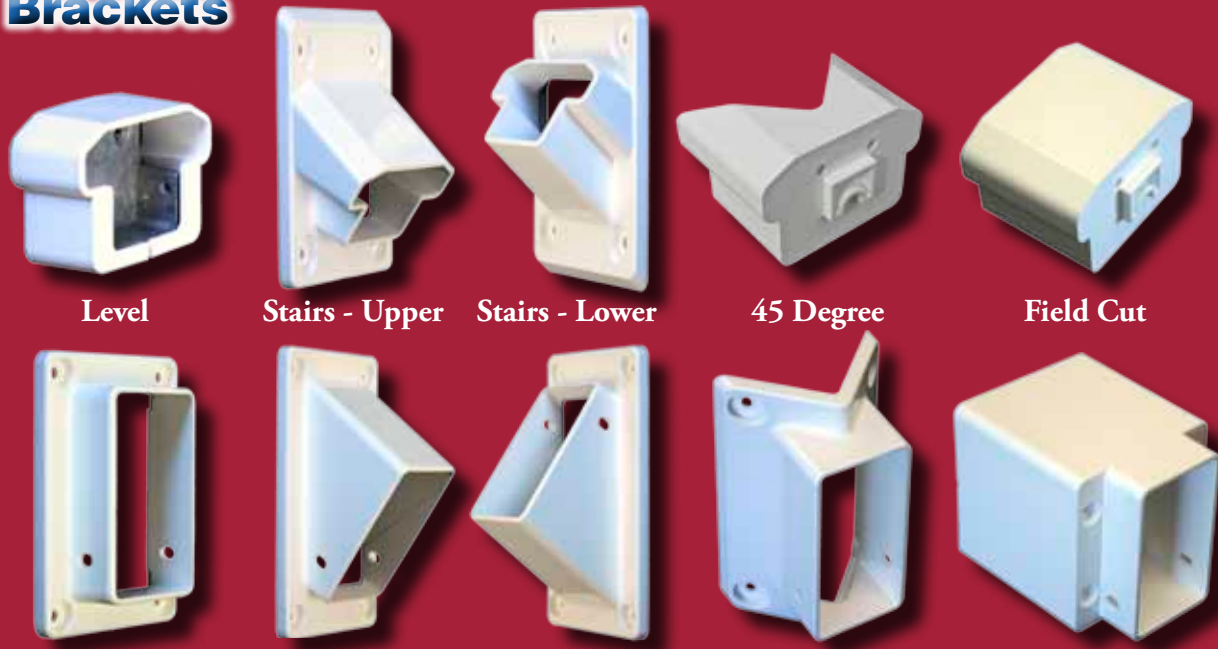


Khaki



300 Series Railing

Brackets



Balusters



Round Aluminum
LP-Black, LQ-Bronze



BN-Shaker



Railing Accessories

Vinyl Post Caps

Available in White, Almond, and Khaki.



**Horse
(Standard)**



**(Traditional)
New England**



**Classic
New England**



Gothic



Internal



Hampton



Bridgeport



Dome



Federation



**Starr (4" only)*
Low Voltage Light**



**Easton (5" only)*
Low Voltage Light**



**Cambridge*
Low Voltage Light**



* The Starr, Easton, and Cambridge LV Lights shown above are also available in Solar versions.

Posts

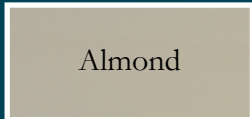
Structural Porch Posts



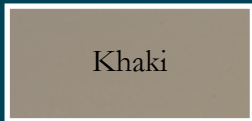
- 4" x 4" and 5" x 5"
- 108" Length



White



Almond



Khaki



108" Post Maximum Loads:
 4" - 7,883 lbs., 1,637 lbs. uplift
 5" - 11,571 lbs., 1,854 lbs. uplift

Post Sleeves

- 4" x 4" sleeves in 40", 48", 54", 8', 9' and 10' lengths
- 6" x 6" sleeves in 40", 54", 9' and 11' lengths



Post Wraps



- 4" and 6" 4-piece wraps
- 4" - 12" 8-piece wraps

Post Skirts

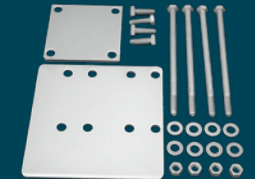


- 4", 5", and 6" skirts
- Available in 1, 2, and 4 pieces

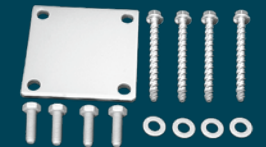
Post Mounts



- 4" and 5" mounts
- Post mount leveling hardware available for Wood or Concrete surfaces (see Page 17)

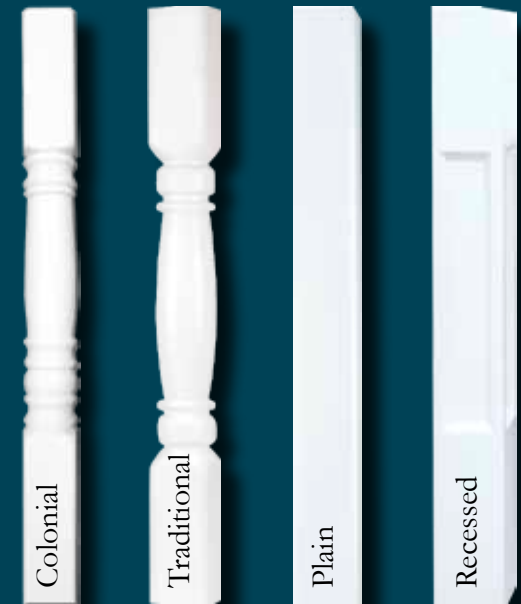


Wood mount kit



Concrete mount kit

Newel Posts



- 4"
- 4" or 5"
- 4" or 5"
- 5"
- Available in 38" and 54" heights

Columns

Structural Columns

- 8" and 10" Tapered Columns
- 8" Straight Columns
- Available in 9' and 10' lengths



Round Straight

8"

Round Tapered

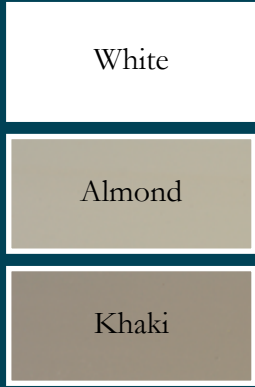
8" or 10"

Round Tapered Fluted

8"

Square

(Trim Kit sold separately)



White

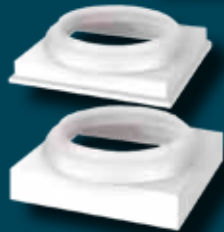
Almond

Khaki

Column Trim Kits



Square Column
Top & Bottom
Trim Kit



Round Column
Top & Bottom Trim Kit

Round Column Adapter

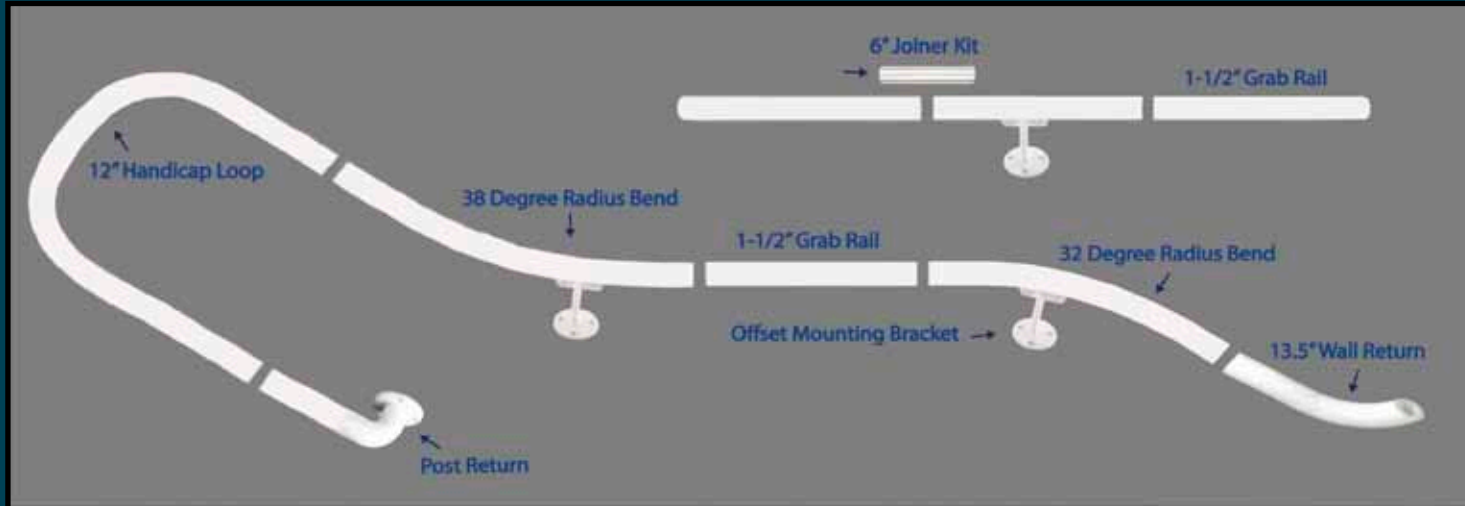


Column Maximum Load:
18,000 lbs., 1,600 lbs. uplift

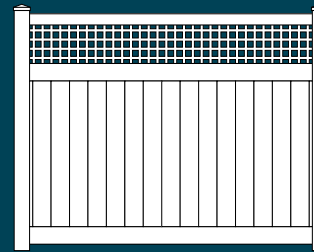
Secondary Handrail

Strength and Safety - ADA Code Compliant

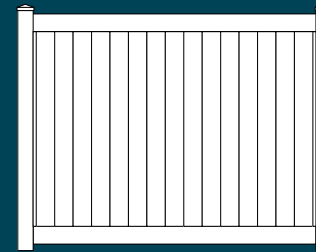
Available in:
White, Almond, and Black.



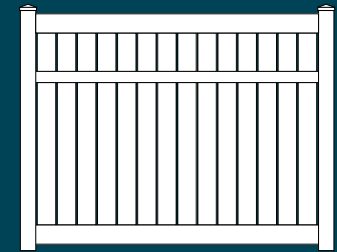
Privacy Dividers



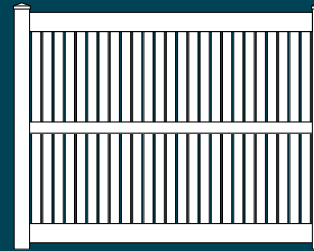
Arundel



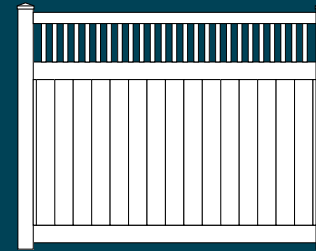
Caroline



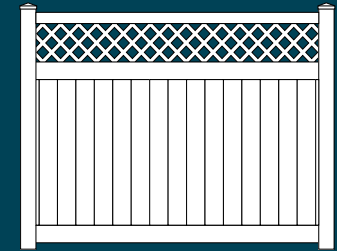
Carroll



Dorchester



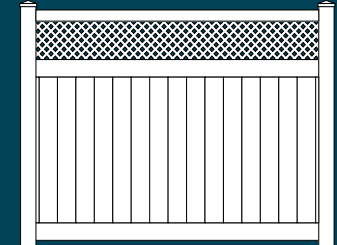
Talbot



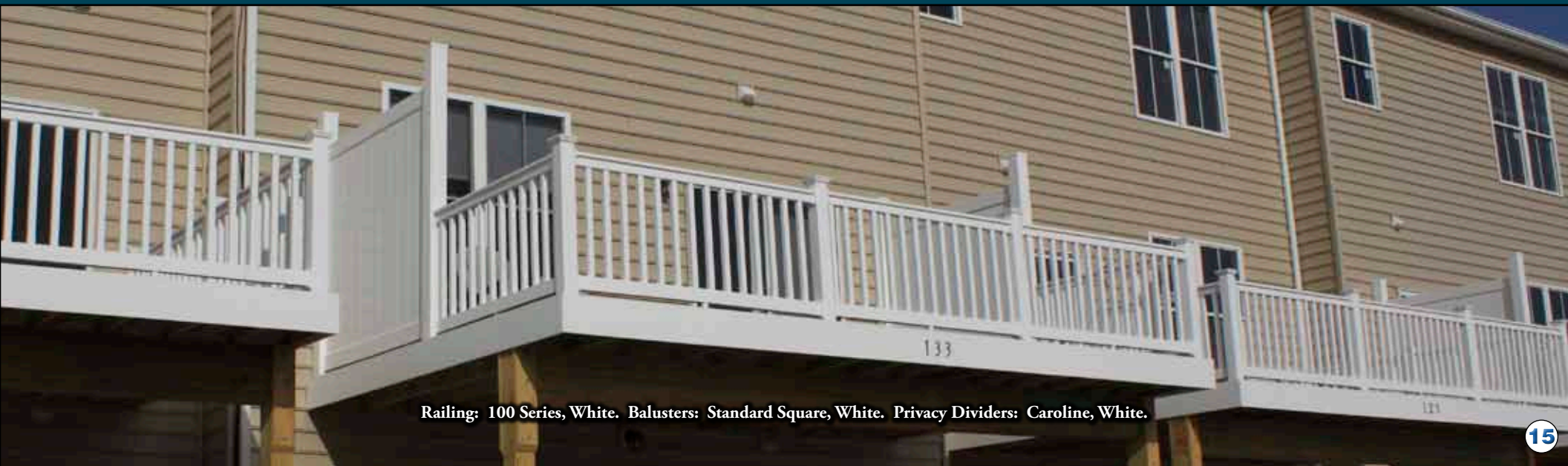
Wicomico



Rail Mounts



Wicomico PR



Railing: 100 Series, White. Balusters: Standard Square, White. Privacy Dividers: Caroline, White.

Pergolas, Arbors, and Lattice

Custom Vinyl Pergolas and Arbors available in white and almond colors at Shoreline Vinyl Systems. Lattice styles Privacy and Traditional are available in white, almond and khaki; Square Lattice is only available in white.



Privacy



Traditional



Square



Photo Gallery



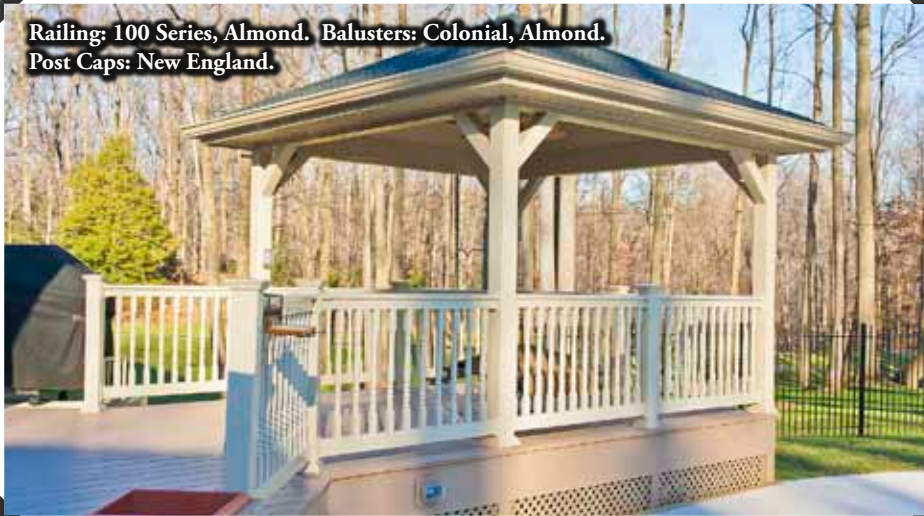
Railing: 100 Series, White. Balusters: Square, White. Pergola also available at Shoreline Vinyl Systems.



Railing: 100 Series, White. Balusters: Square, White. Post Caps: Federation.



Railing: 100 Series, Almond. Balusters: Colonial, Almond. Post Caps: New England.



Railing: 200 Series, White. Balusters: 4"-wide Glass. Optional Bent Rails. Deck board rail top is sold separately.



Railing: 300 Series, White. Balusters: Shaker, White. Post Caps: New England.



Railing: 100 Series, Almond. Balusters: Round Aluminum, Black, with optional Baskets. Post Caps: Classic New England and Starr. Almond Pergola & Lattice also shown (p 16).



Railing: 100 Series, Almond. Balusters: Round Aluminum, Black, with optional Baskets. Post Caps: Starr.



Railing: 100 Series, Almond. Balusters: Round Aluminum, Black, with optional Baskets. Post Caps: Classic New England. Almond Lattice also shown (p 16).





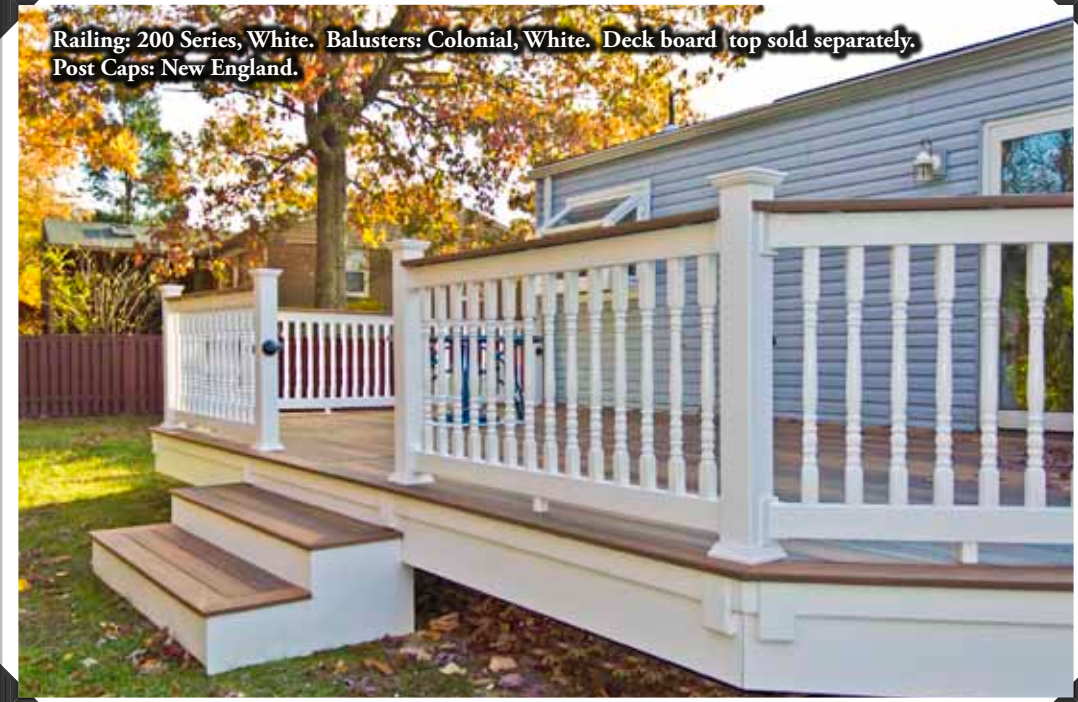
Railing: 100 Series, White. Balusters: Standard Square, White. Optional 6" Square Posts.



Railing: 100 Series, Almond. Balusters: Round Aluminum, Black. Post Caps: New England. Custom Railing and Pergola designs (p 16).



Railing: 100 Series, Almond. Balusters: Round Aluminum, Black, with Collars. Post Caps: Federation.



Railing: 200 Series, White. Balusters: Colonial, White. Deck board top sold separately. Post Caps: New England.

Railing: 200 Series, White. Balusters: Standard Square, White. Post Caps: Classic New England and optional Post Skirts. Deck board top sold separately. Custom Privacy Lattice also shown (p 16).



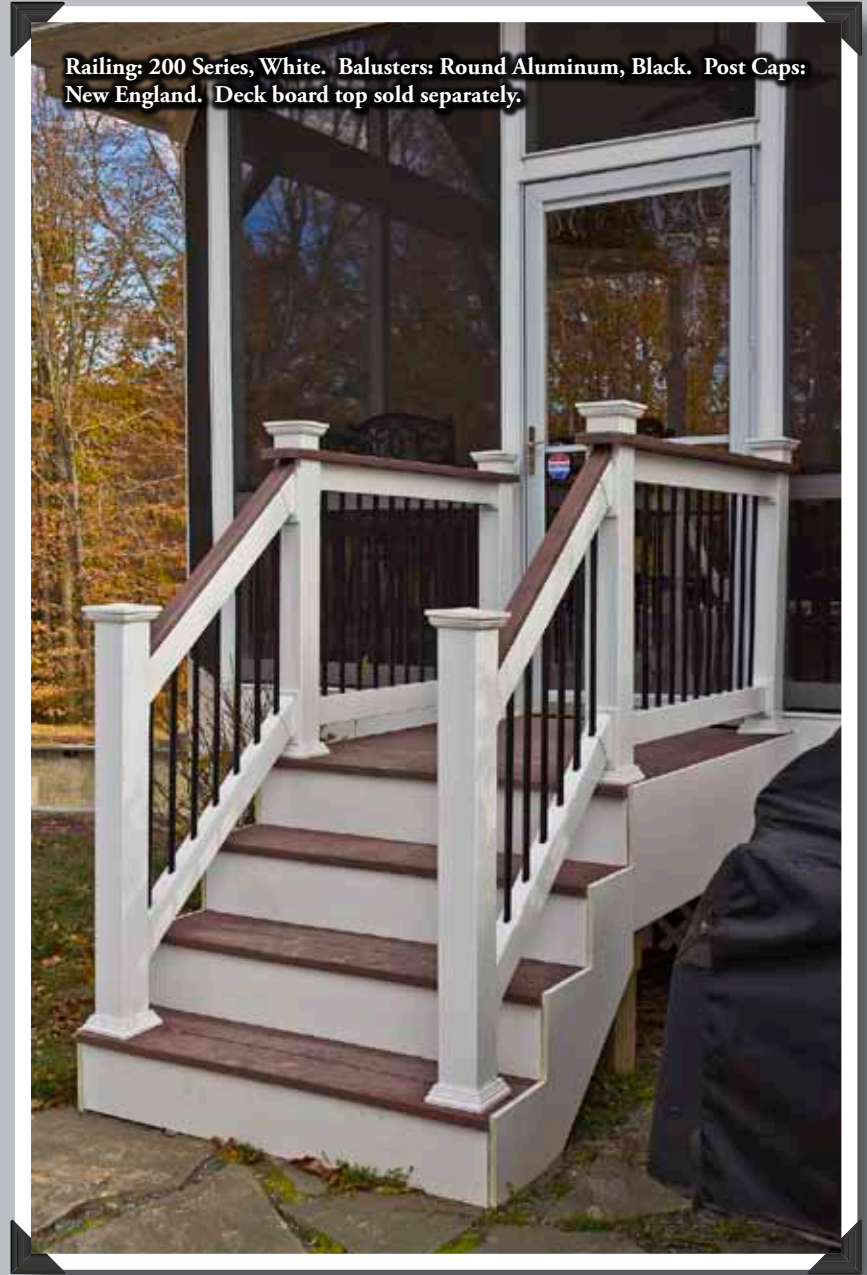
Railing: 100 Series, White. Balusters: Standard Square, White. Optional 6" Square Posts.

Railing: 200 Series, White. Balusters: Standard Square, White. Deck board top sold separately. Post Caps: Classic New England and optional Post Skirts. Privacy Lattice also shown (p 16).





Railing: 100 Series, Khaki. Balusters: Round Aluminum, Black. Post Caps: Standard Horse.



Railing: 200 Series, White. Balusters: Round Aluminum, Black. Post Caps: New England. Deck board top sold separately.



Railing: 100 Series, White. Balusters: Standard Square, White. Pergola also available from Shoreline Vinyl Systems (p 16).

Railing: 100 Series, White. Balusters: Square, White. Post Caps: New England. White Secondary Handrail also shown (p14).



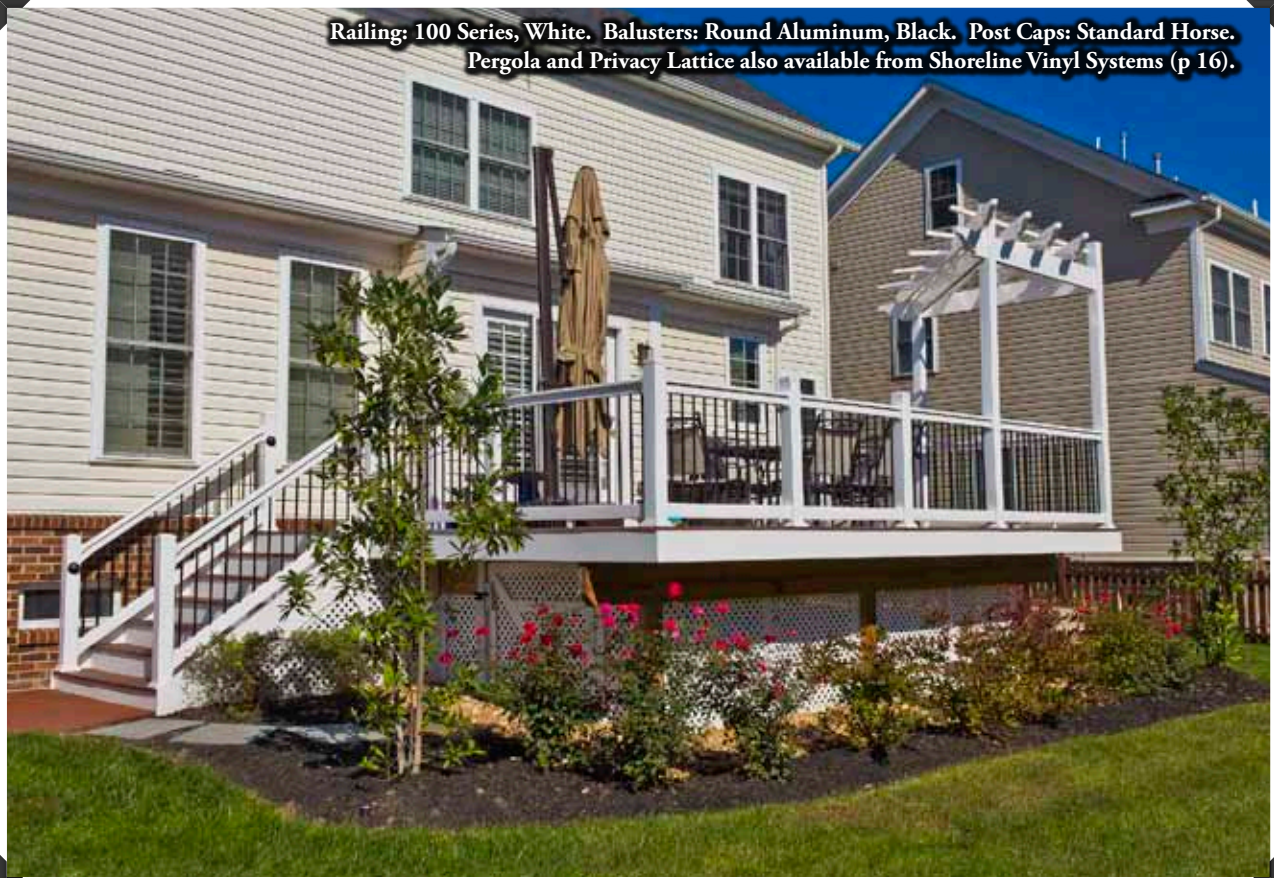
Railing: 200 Series, White. Balusters: Round Aluminum, Black. Post Caps: New England. Deck board top sold separately.



Railing: 200 Series, White, with Clear Acrylic Panels



Railing: 100 Series, White. Balusters: Round Aluminum, Black. Post Caps: Standard Horse. Pergola and Privacy Lattice also available from Shoreline Vinyl Systems (p 16).



DISCLAIMER:

The information in this brochure is provided as a service to introduce you to our products. Due to the nature of economics, the actual materials, colors, and profiles used for fabrication of past products, including products portrayed in this brochure, are not guaranteed to be available for future products. All information, data and images contained in this brochure are believed by us to be accurate and truthful, but we can not, and do not, guarantee or warrant the accuracy of any statement, data or image contained in this brochure. Only our actual product warranty makes any warranty whatsoever with respect to any of our products. Without limiting the foregoing disclaimer of warranties, we and our agents, officers and employees **DISCLAIM ANY IMPLIED WARRANTIES OF MERCHANTABILITY AND ANY IMPLIED WARRANTIES OF FITNESS FOR ANY PARTICULAR PURPOSE** of any product provided by us.

Vinyl Railing Systems



Your Authorized Dealer

